

# SOUTH BANK SB COLLEGES

Part of **LSBU** | GROUP



APPLY NOW > [southbankcolleges.ac.uk](https://southbankcolleges.ac.uk)

Content	Page
Access - Get Degree Ready	4
Apprenticeships	5
Beauty / Business and Accounting	6
Construction / Computing and IT	6
Creative and Digital Industries / Counselling	7
Dental / Early Years and Teaching	8
Engineering	9
Engineering	9
Health and Social Care	10
Hospitality and Catering / Performing Arts	10
Science / Sport / Travel and Tourism	11
TLevels	12 - 13
Fast-track to university	14
Level 4	15
Essential Skills	16 - 18
Free Online Learning	19
Lambeth College Nursery	19



## Welcome

### Discover Your Future at South Bank Colleges

South Bank Colleges, including [Lambeth College](#) and [London South Bank Technical College](#), is a vibrant learning community. With campuses in [Clapham](#), [Brixton](#), and [Nine Elms](#), it offers a wide range of technical, vocational, and academic courses.

### Explore Your Pathway at South Bank Colleges

Become qualified and industry-ready professionals, full of motivation and essential skills for today's competitive job market. High standards are maintained in teaching, learning environments, industry connections, and study resources. Students are encouraged to take charge of their learning, think independently, and work well with others. Whether you want to enter the workforce directly or continue your studies at university, South Bank Colleges supports your journey to success.

### LSBU Group

Being part of an exciting educational group means our students have access to incredible support and opportunities. We regularly work with academics from within the university on enhancing our curriculum. Our students have access to excellent facilities, placement opportunities and advice. We work within LSBU Group to ensure every student is ready for the next step in their lives; whether that be progression within the group, an apprenticeship or degree or full-time employment

**Student Support** - We offer a wide range of support to help give you every opportunity to do well in your studies at Lambeth and London South Bank Technical College. This includes:

- Academic support
- Financial support
- Career support
- Wellbeing and Safety support

**London South Bank Technical College** - The Nine Elms campus is at the forefront of innovative education, specialising in vocational and technical excellence. Here, students engage with STEAM subjects in a state-of-the-art, work-based learning environment, designed to mimic real-world professional settings. The curriculum focuses on hands-on



experience, blending tech-forward labs, industry-led masterclasses, and collaborative projects. This equips students with practical skills that can be used immediately in the workplace. Additionally, Level 3 and 4 courses offer pathways to degree programmes and apprenticeships, creating a direct link to higher education and career advancement.

**Lambeth College** - Lambeth College is dedicated to transformative education, offering a wide range of essential skills and vocational training programmes from Entry 1 to Level 4. The campuses in Clapham and Brixton are closely connected to the local community, providing personalised learning experiences that resonate with and uplift a diverse student body. With strong ties to local employers and a curriculum reflecting the needs of the London job market, Lambeth College helps students unlock their potential and achieve their career goals.





## Access – Get Degree Ready

Our tailor made Level 3 one-year Access courses map directly to degree courses at LSBU. If you are looking for a clear path to any university then these are the perfect option. If you don't quite have what you need to start at Level 3, then why not apply for a Level 2 course to start you on the right path.

Check your eligibility with us, as you may qualify for a fully funded qualification.

Course	Level	Age	Campus
Construction and Built Environment	3	19+	Nine Elms
Engineering	3	19+	Nine Elms
Health and Human	3	19+	Nine Elms
Medical Biosciences	3	19+	Nine Elms
Medine	3	19+	Nine Elms
Nursing	3	19+	Nine Elms
Product Design	3	19+	Nine Elms

**FREE**

**APPLY NOW** 

[southbankcolleges.ac.uk](https://southbankcolleges.ac.uk)

# Apprenticeships

Stay ahead of the job market while learning work-life skills in real industries. Working with over 1000 employers, you can choose apprenticeships in:

## Level 2

- Bricklayer • Early Years Practitioner
- Healthcare Support Worker

## Level 3

- Building Services Design Technician • Business Administrator
- Civil Engineering Technician • Dental Nurse
- Early Years Educator • Engineering Technician
- Engineering Technician
- Installation Electrician/Maintenance Electrician
- Low Carbon Heating Technician
- Plumbing and Domestic Heating Technician
- Surveying technician • Team Leader/Supervisor

## Level 4

Orthodontic Therapist

## Level 5

Dental Technology

Find out more 

t: 020 7501 5000 e: [apprenticeships@southbankcolleges.ac.uk](mailto:apprenticeships@southbankcolleges.ac.uk)  
w: [southbankcolleges.ac.uk](http://southbankcolleges.ac.uk)



Art	Level	Age	Campus
Art and Design	1 2 3	16+	Clapham

Beauty	Level	Age	Campus
Advanced Beauty Therapy Techniques	4	19+	Clapham
Beauty Therapy	1 2 3	16+	Clapham
Make-up	2	16+	Clapham
Nail Technology	2	16+	Clapham

Business and Accounting	Level	Age	Campus
Accounting	1 2 3	19+	Clapham
Business	1 2 3	16+	Clapham
Leadership and Management <span style="color: red; font-weight: bold;">NEW</span>	4	19+	Clapham



Construction	Level	Age	Campus
Air Source Heat Pump Systems (non refrigerant circuits)	3	19+	Nine Elms
Bricklaying	1 2	16+	Nine Elms
Building Services (Plumbing and Electrical)	1	19+	Nine Elms
Construction Management HNC <span style="color: red; font-weight: bold;">NEW</span>	4	19+	Nine Elms
Construction Skills	1	16+	Nine Elms
Electric Vehicle Charging Point Installation	3	19+	Nine Elms
Painting and Decorating	2	19+	Nine Elms
Plumbing	2 3	16+	Nine Elms
Solar Photovoltaic (PV) <span style="color: red; font-weight: bold;">NEW</span>	3	19+	Nine Elms
T Level in Design, Surveying and Planning for Construction	3	16-18	Nine Elms

Computing and IT	Level	Age	Campus
Information and Creative Technology	2	16+	Nine Elms
Information Technology	1 3	16+	Nine Elms
Software Development CertHe	4	19+	Nine Elms
T Level in Digital Production, Design and Development	3	16-18	Nine Elms

## Counselling

	Level	Age	Campus
Counselling	2 3	19+	Clapham
Counselling	4	19+	Elephant & Castle

## Creative and Digital Industries

	Level	Age	Campus
Animation and Visual Effects <b>NEW</b>	3	16+	Nine Elms
Esports	2 3	16+	Nine Elms
Film and TV	2 3	16+	Nine Elms
Film Production HNC	4	19+	Nine Elms
Games Design	2 3	16+	Nine Elms
Games Development HNC	4	19+	Nine Elms
Graphic Design	3	16+	Nine Elms
Photography	1 2 3	16+	Nine Elms
T Level Broadcast and Media	3	16-18	Nine Elms
TV production HNC	4	19+	Nine Elms





Dental	Level	Age	Campus
Dental Technology	3	16+	Nine Elms
T Level in Assisting with Healthcare Science (Dental Nursing)	3	16-18	Nine Elms

Early Years and Teaching	Level	Age	Campus
Caring For Children	1	16+	Clapham
Early Years	2	16+	Clapham
Early Years Advanced Practitioners HNC	4	19+	Clapham
Early Years Practitioner	3	16+	Clapham
Early Years Workforce	3	16+	Clapham
Supporting Teaching and Learning in Schools	2 3	16+	Clapham
T Level in Education and Childcare	3	16-18	Clapham

“Teachers...bring lessons to life”

‘Good’ Ofsted Inspection Report, 2022

**APPLY NOW** 

[southbankcolleges.ac.uk](https://southbankcolleges.ac.uk)

Engineering	Level	Age	Campus
Access to HE Engineering	3	19+	Nine Elms
Access to HE Product Design	3	19+	Nine Elms
Access to HE Construction and Built Environment	3	19+	Nine Elms
Advanced Manufacturing Engineering and Robotics	3	16+	Nine Elms
Engineering	1 2 3	16+	Nine Elms
Engineering HNC	4	19+	Nine Elms
T Level Foundation Programme Engineering	2	16-18	Nine Elms
T Level in Design and Development for Engineering and Manufacturing	3	16-18	Nine Elms



## Health and Social Care

	Level	Age	Campus
Introduction to Health, Social Care and Children's and Young People's Settings	1	16+	Nine Elms
Health and Social Care	2 3	16+	Nine Elms
T Level Foundation Programme - Health and Science	2	16-18	Nine Elms
T Level in Health Supporting the Adult Nursing team	3	16-18	Nine Elms
T Level in Health Supporting the Midwifery Team	3	16-18	Nine Elms
Understanding the Safe Handling of Medication in HSC	2	16+	Nine Elms



## Hospitality and Catering

	Level	Age	Campus
Patisserie and Confectionery	2 3	16+	Elephant & Castle

## Performing Arts

	Level	Age	Campus
Music, Performing and Production Arts	1	16+	Clapham
Performing and Production Arts	2 3	16+	Clapham



Science	Level	Age	Campus
Access to HE Health and Human Science	3	19+	Nine Elms
Access to HE Medical Biosciences	3	19+	Nine Elms
Access to HE Medine	3	19+	Nine Elms
Access to HE Nursing	3	19+	Nine Elms
Applied Science Biomedical Science	3	16+	Nine Elms
Applied Science Foresnsic Science	3	16+	Nine Elms
Biology HNC	4	19+	Nine Elms
Chemistry HNC	4	19+	Nine Elms
Forensic Science	3	16+	Nine Elms
Forensic Science HNC	4	19+	Nine Elms
Healthcare Science Associate Cert HE	4	19+	Nine Elms
Medical Science	3	16+	Nine Elms
Science	12	16+	Nine Elms
T-Level Foundation Year - Science	2	16-18	Nine Elms
T Level in Healthcare Science	3	16-18	Nine Elms
T Level in Science	3	16-18	Nine Elms

Sport	Level	Age	Campus
Sport and Active Leisure	1	16-19	Clapham
Sport Science	3	16-19	SBU Sixth
Sport	2	16-19	SBU Sixth
Sport and Physical Activity	3	16-19	SBU Sixth



**Find out more**   
[southbankcolleges.ac.uk](https://southbankcolleges.ac.uk)

Travel and Tourism	Level	Age	Campus
Travel and Tourism	123	16+	Clapham

# T-LEVELS

## THE NEXT LEVEL QUALIFICATION

T Levels are equivalent to A Levels and prepare students aged 16 to 18 to progress into skilled employment, an apprenticeship or higher education. The courses are designed to offer knowledge-based learning and on-the-job experience through an industry placement of 45 days (315 hours).

T Level students will spend 80% of the course in their learning environment, gaining the skills that employers need. The other 20% in a meaningful industry placement, where they put these skills into action.

T Levels will provide a mixture of:

- Knowledge based learning and practical skills specific to your chosen industry or occupation
- An industry placement of at least 45 days (315 hours) in your chosen industry or occupation
- Relevant digital skills as well as Maths and English
- Common workplace skills



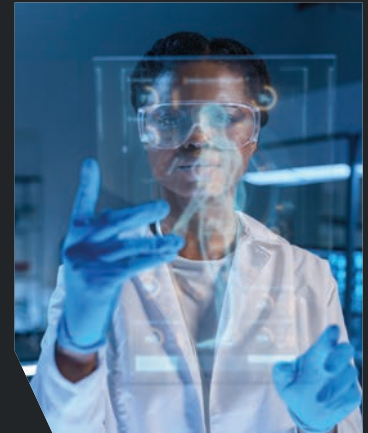
# T-LEVELS

## THE NEXT LEVEL QUALIFICATION

- Design and Development for Engineering and Manufacturing
- Design, Surveying and Planning for Construction
- Digital Business Services
- Digital Production, Design and Development
- Education and Early Years
- Health (Dental Nursing)
- Health (Supporting the Adult Nursing team)
- Health (Supporting the Midwifery Team)
- Health Care Science
- Media, Broadcast and Production
- Science

### T level Foundation Programmes

- Engineering
- Health and Social Care
- Science



Find out more   
[southbankcolleges.ac.uk](https://southbankcolleges.ac.uk)

# Fast-track to university

Whether starting fresh, levelling up, or shifting directions, Level 4 courses and HTQs are your pathway to becoming highly-skilled and sought after in the competitive job market. More than just developing your subject-specific knowledge and skills, these one-year, full-time courses fully prepare you for higher-level study by teaching you the skills you will need at university and give you the confidence and experience to fulfil your academic ambitions.

Level 4 courses are a great progression route after completing A levels, a level 3 or T levels.



# Level 4 professional courses

We want you to **take on the world**.

This is your future. Get the job and career you want.

- **Biology**
- **Chemistry**
- **Construction Site Supervision**
- **Engineering**
- **Film Production**
- **Forensic Science**
- **Games Development**
- **Healthcare Professions' Support for England**
- **Healthcare Science Associate**
- **Network Engineer**
- **Software Developer**
- **TV Production**



**APPLY NOW**   
[southbankcolleges.ac.uk](https://southbankcolleges.ac.uk)

Successful completion of a relevant Level 4 course will guarantee you a year two undergraduate place at London South Bank University (LSBU)

# Essential Skills for Young People

## Set for Success: KS4 14-16 year olds

What is on offer? The Lambeth Gateway College offers a range of placements for KS4 (Year 10 and 11) students. These include;

- *School Links* – One day a week, studying a Vocational Pick
- *Core Timers* – Two days a week, studying GCSE English & Maths
- *Part Timers* – Three days a week, studying a Vocational Pick, Personal Development and Employability Skills

\*Referrers can pick multiple placement types and have their student(s) study with us as 'Full Timers'\*

**Lambeth College courses** – Sport, Creative Art, Hospitality & Catering and Multi-level ESOL.

**SBU Sixth: courses** : Health & Social Care, Engineering.

## English and Maths 16-18 year olds

**GCSE English** – Study a range of reading and writing techniques designed to challenge your understanding of written English.

**GCSE Maths** – Learn how to apply mathematical techniques to solve problems, reason mathematically and draw conclusions, and communicate mathematical information

## Skills Bridge Courses

**English and maths with Business** – Gain a Level 1 in Business at the same time as your English and maths GCSE.

**English and maths with Sport** – Gain a Level 1 in Sport at the same time as your English and maths GCSE.

## ESOL 16-18 year olds

Core offer – ESOL study programmes from Pre-entry to Level 1 which include Functional Skills Maths and work-related enrichment.

## ESOL Plus for 16-18 year olds

Core ESOL study programme with vocational pathways in:

**Creative Arts** You will be able to develop your communication, creative and critical thinking skills, and be able to give presentations and develop entrepreneurial and business skills.

**Performing Arts** enable you to express yourself and develop your creativity. You will gain the tools to think creatively, innovate and appreciate diverse cultures and backgrounds. Learning music, dance and drama.

**Sports** look at fitness programmes and actively take part in gym activities.

**Hospitality & Catering** learn how to plan and prepare a range of meals as well as gaining an understanding of nutrition and healthy eating.

## Pre-apprenticeships

If you are aged between 16 – 24 years old, you can access Pre-apprenticeship programmes focused on employability skills, English and maths.

## Re-engagement Courses for 14-18 year olds

You can improve your confidence, wellbeing and gain new skills to help you to get the job or career you want through our Essential Skills study programmes. *Choose from:*

- *Creative Arts*
- *Construction*
- *Prince's Trust*
- *Sport*
- *Youth Skills*



\*Subject to eligibility

# Essential Skills for Adults

## Entry to Employment

If you are looking to increase your career opportunities, upskill or move into a new career, you can choose from range of subjects to help you get there faster. All courses have English, Maths, Digital and Functional Skills attached. Choose from:

• *Business Administration* • *Construction Skills* • *Digital Skills*  
• *Employability* • *Literacy* • *Numeracy* • *Skills for Professions in Health & Social Care* • *Understanding Safeguarding in Education and Childcare Settings*.

## English

**Pre-entry to Level 2 Functional Skills** These courses are designed to give you the knowledge and skills to operate more confidently, effectively and independently in education, work and everyday life. You will develop your English skills in spelling, vocabulary usage, grammar and punctuation, reading, writing, speaking, and listening.

**GCSE** On this course, you will study the key areas of English you will need to achieve your future educational or career goals. These include critical reading and comprehension, identifying themes and ideas, writing clear and coherent text, writing for impact, speaking standard English, presenting information and ideas through English language, and much more.

## Maths

**Pre-entry to Level 2 Functional Skills** Develop your maths skills in the Four Rules of Number (addition, subtraction, multiplication, and division), and gain a good understanding of interpreting graphs, managing money, and finding averages. You'll also learn about fractions and percentages, converting metric measurements, and calculating area, perimeter and volume.

**GCSE** On this course, you'll study the essential mathematical topics you'll need to achieve your future educational or career goals. These include areas and volumes, the Pythagoras theorem, trigonometry, quadratic equations, probability and statistics, and much more.

## ESOL Adults

Core offer - ESOL Part-time day, evening and Saturday courses from Pre-entry to Level 2

## ESOL Plus for Adults

A range of part time courses that can be studied as part of your ESOL course or standalone. The courses develop skills for employment and further study.

**Health & Social Care with ESOL.** This course will provide you with an introduction to the skills required by care professionals. Possible career opportunities are, working in a hospital, GP office, care work in the community.

**IT for ESOL** You will develop skills for using a computer, searching the internet, creating and saving documents. The course will help you become more confident in using the computer for study and work.

**Functional Skills Maths with ESOL** You will be taught Maths skills by ESOL teachers to help you achieve a FS Maths qualification. The course will help you to progress on to higher level courses, work and improve everyday life skills.

**Preparation for IELTS** This course is designed for motivated learners of intermediate, upper-intermediate and advanced level who aim to qualify for work or study in the UK or who would like to improve their language skills for work. The course will boost your English language skills and help you to familiarise yourself with the IELTS format and requirements.

## Sector-Based Work Academy Programme (Swaps)

A 6-week programme with vocational training and work experience with an employer, where you will learn new skills on the job. At the end of the programme, you will have a job interview.

## Princes Trust for Young People 16–25 year olds

A 12-week, Personal Development Programme to gain qualifications in Employability, Teamwork and Community skills at Entry Level 1, 2 and 3

- Young people will build their confidence, develop key employability skills, and give back to their local community through social action community projects and make lifelong friends
- The Team programme is delivered by Delivery Partners including colleges, uniformed organisations such as Fire & Rescue Services and youth organisations such as YMCA.



## Inclusive Learning Skills for SEND: 16–24

We offer a range of pathways from Pre-entry to Level 1 courses for young adults with an Educational Healthcare Plan. Courses include:

### Entry Level

- Learning for the community
- Learning for Independence
- Creative Art
- Digital Skills
- Sport & Fitness
- Hospitality & Catering
- Skills for Retail
- Taster course
- Preparation for Employment
- Supported Internship at Kings College Hospital

### Level 1

- Creative Art
- Hospitality & Catering

## Skills for SEND: 24+

We offer 12 week courses to adult learners to improve independence and access to work.

E1 My Community Voice (Including E1 Functional Skills English)

E1 Maths in the Kitchen (Including E1 Functional Skills Maths)

E2 Maths in the Garden (including E2 Functional Skills Maths)

## FREE Online Learning

Our online courses match the same high standard, and are taught by the same expert tutors that you would expect from a leading provider of Further Education.

Designed with flexibility in mind, most are taught over 10-12 weeks, so you can choose when and where to study at times that suit you.

### Courses

- L2 Certificate in Digital Marketing (TQUK)
- L2 Certificate in Principles of Team Leading (RQF)
- L2 Certificate in Principles of Business Administration (NCFE)
- L3 Certificate in Principles of Leadership & Management (ILM)



## Lambeth College Nursery

Choosing South Bank Colleges Nursery for your child gives you the flexibility to learn and have your childcare needs taken care of at the same time.

*"Inspirational cultural capital, building communities and celebrating culture"* Ofsted inspector 25 January 2024

## Outstanding, flexible childcare in an award winning nursery!

Registered students have access to:

- Free\* nursery places for children aged 2-4 years
- Child-led, fun learning through play activities and experiences
- Secure, stimulating indoor and outdoor areas
- A dedicated, professional, caring and qualified staff team
- Parental support

For young children aged 2 to 4 years  
Open 8:45am - 5:15pm (term time only)

\*Available for eligible families



Contact us: [childcarebursaries@southbankcolleges.ac.uk](mailto:childcarebursaries@southbankcolleges.ac.uk)



**LONDON SOUTH BANK  
TECHNICAL COLLEGE**  
Part of **LSBU** | GROUP



**LAMBETH  
COLLEGE**  
Part of **LSBU** | GROUP

Visit us

**Nine Elms Campus**  
Belmore Street,  
Wandsworth Road,  
London SW8 2JY

---

**Clapham Campus**  
45 Clapham Common  
South Side  
London, SW4 9BL

**Brixton Campus**  
56 Brixton Hill  
London, SW2 1QS

**APPLY NOW** 

[southbankcolleges.ac.uk](https://southbankcolleges.ac.uk) | 020 7501 5000 | [info@southbankcolleges.ac.uk](mailto:info@southbankcolleges.ac.uk)